



Setting Up C1 Report Designer for SQL Reporting

Introduction

In developing the Price Modeling application for Version 8.11, ECI² rewrote all of Ensight Pro's sales history databases and tables in Structured Query Language (SQL), a widespread industry standard for relational databases. As a result, all the SQL data for your Ensight Pro sales history is now available for use with SQL reporting.

Dealers may use any third party SQL reporting tool to access the data on a read-only basis. For example, some dealers who use Crystal Reports® or Microsoft® Access® can design and save their own reports from Ensight Pro SQL sales data.

Read on to learn how to set up SQL Reporting Tools to access Ensight Pro data.

Third-Party SQL Reporting

To access the read-only sales data from a third-party SQL reporting tool, do these steps:

1. Install Ensight Pro Version 8.11 or higher.
2. Use the EnsightEBS Utility Program to test your database connection, and validate and import your data. For detailed instructions, see Using the EnsightEBS Utility Program (www.ddms.com/Resources/Support/faq/utilities/ensightebsutility.pdf).
3. Set up the following basic connection information:
 - **SQL Server:** *[DDMSServer]\ECI2*
where *DDMSServer* is the name of the dealer's DDMS Server
 - **Database:** Ensight
 - **User Name:** netclient
 - **Password:** db_user

If you don't already use Crystal, Access, or similar reporting software, Ensight Pro Version 8.11 comes with a free third-party reporting tool, C1 Report Designer, geared for SQL developers who are familiar with designing SQL queries and reports.

Note: ECI² supports the accuracy and integrity of the data in the new SQL tables, as required to operate Ensight Pro applications. However, ECI² has no plans to support custom SQL statements or the third-party SQL Reporting tools, including C1 Report Designer.

ComponentOne's HelpCentral offers documentation and a community forum (<http://helpcentral.componentone.com>) to support C1 Report Designer, which is part of ComponentOne Studio® and ComponentOne Reports™ for .NET Designer Edition.

Requesting Authorization for C1 Report Designer

To obtain authorization for C1 Report Designer, follow these steps:

1. Print the **Authorization Request For Third-Party C1 Report Designer** from our Web site (www.ddms.com/Resources/Support/faq/forms/C1RD.pdf).
2. A principal of your dealership or company must sign the agreement.
3. Fax the completed request form to ECI² Technical Support at 682-831-9909.

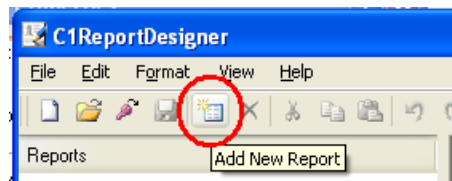
Setting Up C1 Report Designer for SQL Reporting

4. Install Ensight Pro Version 8.11 or higher.
5. At your convenience, use the EnsightEBS Utility Program to test your database connection, and validate and import your data. For detailed instructions, see [Using the EnsightEBS Utility Program](http://www.ddms.com/Resources/Support/faq/utilities/ensightebsutility.pdf) (www.ddms.com/Resources/Support/faq/utilities/ensightebsutility.pdf).
6. Within three (3) working days of receiving the signed agreement, an ECI² representative will contact you to complete the authorization procedure.

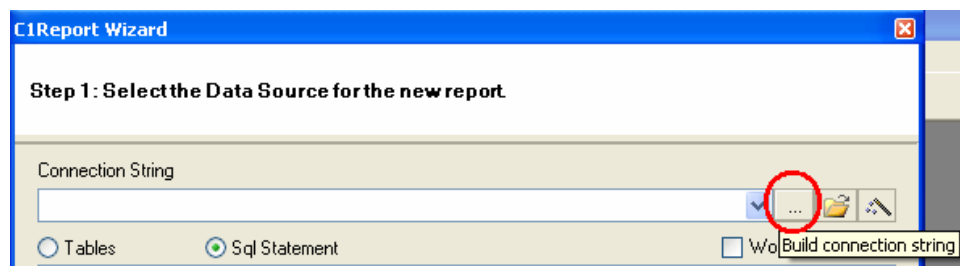
Building and Testing the Connection String in C1 Report Designer

Once the feature is authorized, you must create the SQL data connection:

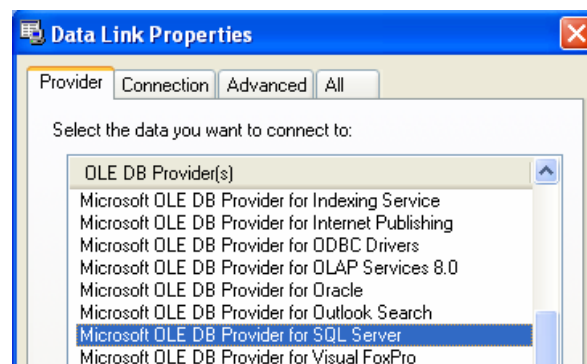
1. From the KeyOp Menu, double-click the **Design Reports** icon.
2. You may be prompted for a password before you can use the C1 Report Designer.
 - If a master password is set up in your [X] screen, enter the master password and click **OK**.
 - If master password is NOT set up in your [X] screen, leave the password prompt blank and click **OK**.
3. In the C1ReportDesigner window, click the **Add New Report** toolbar button.



4. Choose the **Build Connection String** button by the Connection String field.



5. On the **Provider** tab, choose **Microsoft OLE DB Provider for SQL Server**.



Setting Up C1 Report Designer for SQL Reporting

6. On the **Connection** tab, follow these steps, as shown below:

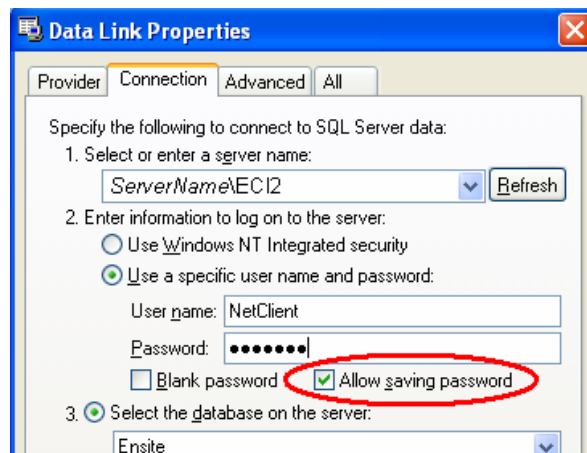
- Select or manually type your SQL server name into the drop down box

Note: In the example shown below, the variable *ServerName* should be replaced with the name of your DDMS server. Make sure the server name ends with the “\ECI2” instance of SQL.

- Choose “**Use a specific user name and password**”
- Enter the user name **NetClient**
- Enter the password **db_user**
- Be sure to check “**Allow saving password**”
- Choose the database “**Ensite**”

7. Click the **Test Connection** button.

8. Click **OK** twice.



Once your connection is successful, you can use C1 to compose SQL statements and design custom reports. You can select from lists of fields and limits, customize each report’s display, and manage saved formats.

Other users can view and print your saved custom C1 reports in the Report Preview application, from the Ensite Pro Reports menu. Report Preview can send the output to the printer, or export to Excel, PDF, or other options.

Note: ECI² supports the accuracy and integrity of the data in the new SQL tables, as required to operate Ensite Pro applications. However, ECI² has no plans to support custom SQL statements or the third-party SQL Reporting tools, including C1 Report Designer.

ComponentOne’s HelpCentral offers documentation and a community forum (<http://helpcentral.componentone.com>) to support C1 Report Designer, which is part of ComponentOne Studio® and ComponentOne Reports™ for .NET Designer Edition.