



Printer Emulations



eCommerce Industries, Inc.



October 2002 Item # H-EMULAT

Contents

Understanding Printer Emulations	3
Setting Up Emulation Printers	3

Understanding Printer Emulations

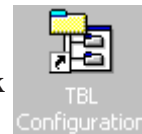
You can add printer emulations to use with TBL/NT systems. These emulations can be customized to meet your needs. You can easily add printers not defined by TBL/NT and manage their settings using the Emulation Workshop. You access the Emulation Workshop through your TBL Configurations settings.

Note: Printer emulation codes must be obtained from your printer documentation or the printer manufacturer web site. DDMS *does not* supply you with this information.

Setting Up Emulation Printers

To set up emulations for new printers, use the following instructions:

- 1 From your desktop, double-click



- 2 When the TBLConfig window opens, click the plus sign to the left of the Advanced option.

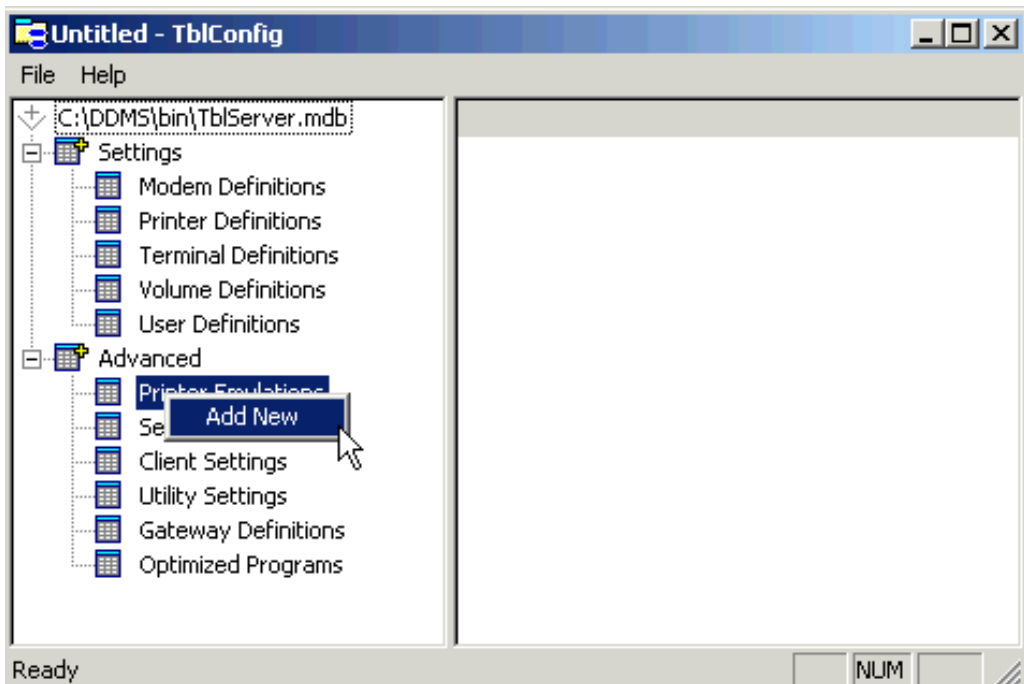


Figure 1:
Selecting to Add
a New Printer

Printer Emulations

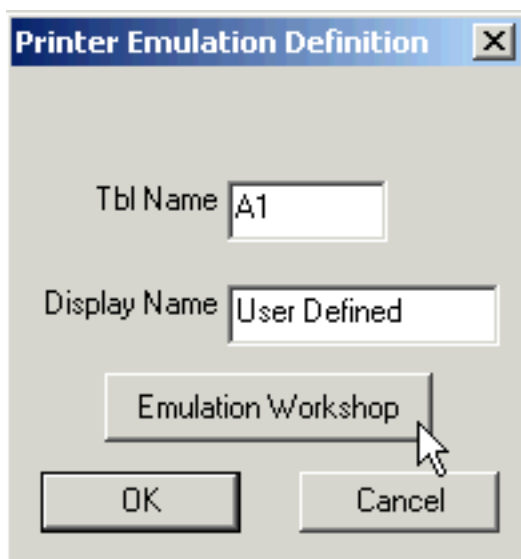
- 3 A list of options appears, including Printer Emulations. Right-click Printer Emulations, and select Add New, as shown in Figure 1.
- 4 In the Printer Emulation Definition window, click the Tbl Name box, and enter the logical name of the emulation printer you are adding, A1, for example.
- 5 Click the Display Name box and enter the name of the emulation printer you are adding. This is a user-defined code, however, DDMS recommends that you enter the printer manufacturer or model number.
- 6 Next click the Emulation Workshop button to open the Emulation Workshop. See Figure 2.
- 7 When the Emulation Workshop window opens, you can specify printer information in the hexadecimal printer control strings (AKA printer control codes). See Figure 3.

Note: Printer emulation codes must be obtained from your printer documentation or the printer manufacturer web site. DDMS *does not* supply you with this information.

To select the emulation code that you are setting up, click the box under the Emulation Code heading, A1, for example.

If the emulation code that you need doesn't appear, click More.

Figure 2: Setting Up an Emulation Printer



8 Set up your printer by entering the hexadecimal codes in the boxes. If you don't know the hexadecimal code, you can use the boxes in the converter window to translate your codes to hexadecimal. To do this:

- For an ASCII code conversion, type the ASCII code in the ASCII box. The hexadecimal code appears in the Hex box. Enter the hexadecimal code in the Printer Control Strings or Colors boxes, where applicable.
- For a decimal conversion, type the decimal in the Decimal box. The hexadecimal code appears in the Hex box. Enter the hexadecimal code in the Printer Control Strings, Colors, or Special boxes, where applicable.

Common codes for hexadecimal codes are listed in the Common Codes box.

9 When you finish, click Save.

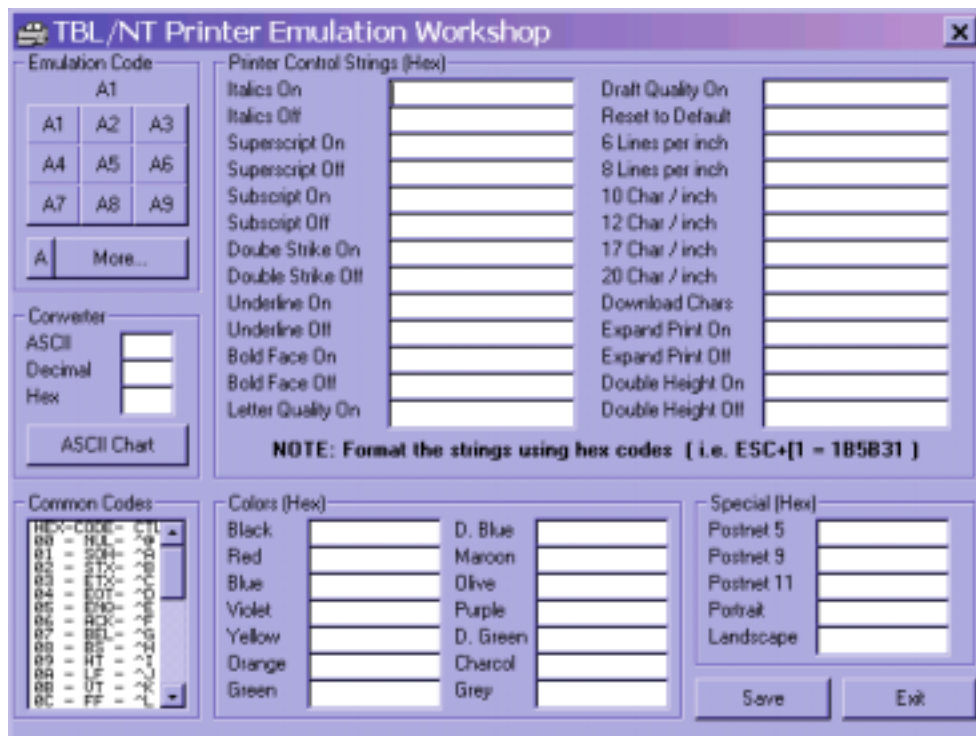


Figure 3: The TBL/NT Printer Emulation Workshop Window

