

Proof of Delivery Online

If your delivery drivers use RouteTrak mobile units to capture proof of delivery, you can allow your Web shoppers to look up that information in Order History. This feature is available in ECinteractive, Dealer Station, is.D-Force and is.D-Force 2. Order History will display a link, which will open a new window that shows the signature for the order, the date when it was signed and the individual who signed it.

To enable this feature, you must add your Web storefront URL to the RouteTrak SyncBox setup window for proper synchronization of delivery data and signature images.

Identify your ECinteractive and is.D-Force 2 Handler URL

The External Partner Handler URL required for ECinteractive or is.D-Force 2 looks like **your main Website address**, followed by the filename **ExternalPartnerHandler.ashx**. In the following examples, the ____ blank represents your account name or number:

http://www.ecinteractive.com/____/ExternalPartnerHandler.ashx

http://www.dforce2.com/____/ExternalPartnerHandler.ashx

Identify your Dealer Station and Original is.D-Force 2 Handler URL

The URL required for Dealer Station or is.D-Force looks like **your main Website address**, followed by the folder and filename **/DealerStation/IReceive.asp** (that's "I" for Ice Cream). In the following examples, the ____ blank represents your account name or number:

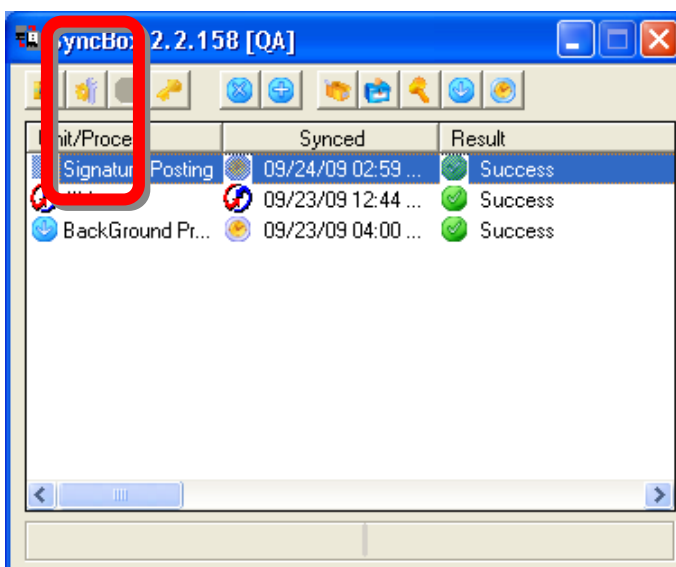
http://www.officesupply-link.com/____/DealerStation/IReceive.asp

http://www.dforceweb.com/____/DealerStation/IReceive.asp

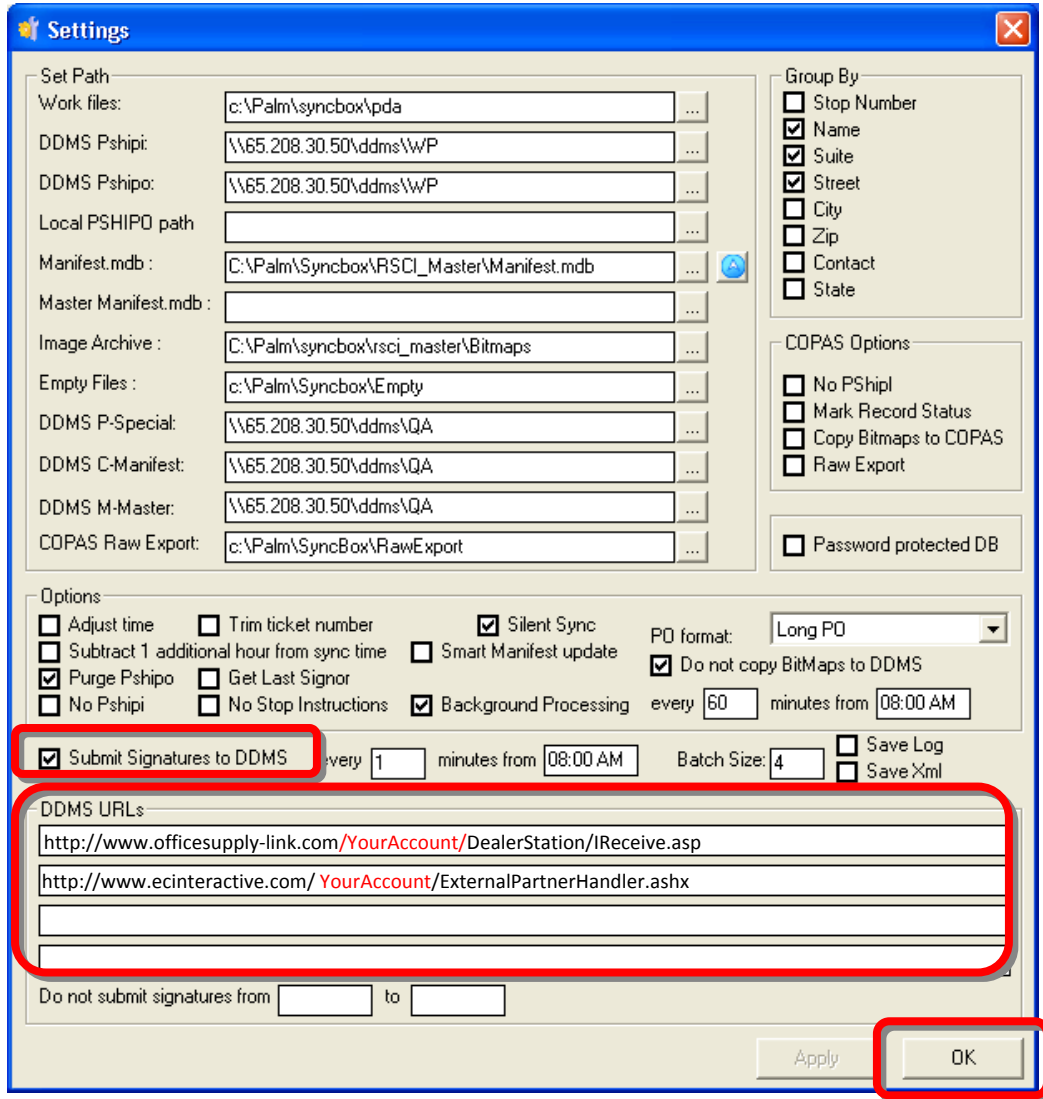
Setup Your Storefront URLs in SyncBox

On the DDMS client machine where RouteTrak SyncBox is installed (where the RouteTrak mobile unit cradle is attached to synch with your system), follow these steps:

1. On the Desktop, double-click the **SyncBox.exe** shortcut, as shown at right.
2. Click the **Settings** button on the toolbar (the second button), as shown below.



3. When prompted for a password, enter the following:
dedushka
4. At the bottom of the Settings window, click to place a checkmark in the **Submit Signatures to DDMS** box.



5. In the field set for **DDMS URLs**, you have four blanks. Enter the Handler URL(s) you identified earlier. Check them carefully for typos.
6. Click **OK**.
7. Minimize or exit SyncBox. However, it should remain running in your Windows Taskbar.

If you need additional assistance, contact your ECi Technical Support Team.