



# *Using the EnsiteEBS Utility Program*



June 2008 Item # H-ENSEBS

# Contents

<b>Understanding the EnsiteEBS Utility Program</b> .....	<b>3</b>
<b>System Requirements</b> .....	<b>3</b>
<b>SQL Data Synchronization</b> .....	<b>4</b>
Setting Up the (LØ) Screen .....	5
<b>Using the EnsiteEBS Utility Program</b> .....	<b>5</b>
Confirming Connectivity to the Server .....	5
Viewing Event Log .....	6
Validating DBF Data .....	7
Importing Data to SQL .....	8
Importing Sales Journals .....	9
Importing Selective Sales Journals .....	11
Importing Purchase Order Journals .....	12
Importing Selective Purchase Order Journals .....	14

## Understanding the EnsiteEBS Utility Program

In the release of DDMS Version 8.11, there were two significant advancements which require the use of SQL databases: Customer Price Plans and Price Modeling. These features make it easier to:

- Create, configure, and analyze customer contracts
- Measure and manage profitability
- Create new price models to target specific items, a customer's sales history, or imported data.

After loading Version 8.11 or higher, the EnsiteEBS Utility program is automatically installed on your server. You must run the EnsiteEBS Utility program to take advantage of the new EnsiteEBS programs. These include: Customer Price Plans, Price Modeling, Bank Reconciliation, and Reporting.

One important step is validating and importing your data into the new SQL database. Once you complete the initial import of your data, your DBF and SQL tables are synchronized. When you update your DBF files, a change file is automatically updated with your changes. This file is monitored every minute and this information is imported into your SQL tables. This process also works in the opposite way, so that when you update SQL tables, such as Price Plan, the corresponding DBF files are updated.

---

**Note:** If you make large changes to the information, you need to allow time for processing the data before you can view it in its new format. For example, if you update the Price Plan data in your SQL table, you may need to wait several minutes before the changes are available in the corresponding DBF files.

---

Before you begin using the EnsiteEBS Utility Program, you need to make sure you meet the necessary requirements and have the proper software installed. The first time you implement one of the new EnsiteEBS programs, you must complete all the steps in this document. Thereafter, you might need to refer back to this document to import new files, if needed.

## System Requirements

- Set the Using Roadrunner field in the (LØ) screen to Y to enable the SQL data synchronization process.
- Install the latest DDMS Version (8.11 or later). Contact ECI Sales to order the newest version.
- You must load DDMS graphical software on your server.
- For information on loading any of these programs, refer to the appropriate update instructions included with the software package.

## SQL Data Synchronization

Beginning with Version 8.11, several DDMS™ applications work primarily with data in a SQL database. Before you can use Customer Price Plans, Price Modeling, SQL Reporting, and so on, your DDMS data must be initially validated, corrected as needed, and imported into the SQL database.

Before installing the EnsiteEBS utility program, you *must* set up a parameter in the text-based (LØ) Global Master Parameters screen. Setting up this parameter saves your changes to the W-CHANGES file.

The W-CHANGES file, previously used to log RoadRunner remote sales, now continuously logs data changes to customers, items, contracts and more. Beginning in DDMS 8.12, the day-end (MA) procedure is enhanced to purge and compress WCHANGES. After this initial process of validation and importing, the system automatically synchronizes your data between the DBF files and the SQL database in the background.

- **DBF to SQL:** The system polls W-CHANGES every 60 seconds to update the SQL tables. Therefore, if you add a contract in the text-based (ET) screen, it may take a minute to move from DBF to SQL applications like Customer Price Plans.
- **SQL to DBF:** When you make changes in Customer Price Plan and Price Modeling, the changes are written to the SQL database first. You may continue working as SQL changes trigger the synchronization process to write to your DBF files in the background.

Once this flag is set to update W-CHANGES, the following databases are affected:

- DDMS Customers, Items, and Customer Price Plans
- Text-based Customers, Items, and Contracts
- Text-based item aliases
- Several text-based Specials screens such as (+A), (+E), (+ES), (+ET), and (+EV)
- (MA) daily backup procedures related to JOUR-S.

**IMPORTANT!!**

## Setting Up the (LØ) Screen

Before installing the EnsiteEBS utility program, you *must* set up a parameter in the text-based (LØ) Global Master Parameters screen.

- 1 Go to the (LØ) screen.
- 2 In the Action field, type **C** to Change.
- 3 At the G/L Location field, enter the general ledger location to change or press Enter.
- 4 Press Tab until the cursor moves to the Using Roadrunner field.
- 5 In the Using Roadrunner field, type **Y** and press Enter.

## Using the EnsiteEBS Utility Program

The EnsiteEBS program allows you to perform several functions.

- 1 Confirm connectivity to the server.
- 2 View Event Log.
- 3 Validate DBF Data.
- 4 Import Data to SQL.
- 5 Import Sales Journals.
- 6 Import Selective Sales Journals.

---

**Note:** The EnsiteEBS Utility Program also includes a parameter for the Manufacturing module. For more information, see the *Manufacturing* handout.

---

## Confirming Connectivity to the Server

- 1 Open Explorer and navigate to: C:\DDMS\CLIENT\Browser or D:\DDMS\CLIENT\Browser on the DDMS Server.
- 2 Double-click EnsiteEBS.exe to open the EnsiteEBS Utility Program.

---

**Note:** TBL Server must be running.

---

- 3 Confirm connectivity to the server.

Before you import data to SQL, you need to confirm that your server is properly connected.

- 3.1 Click Connectivity Test to open. See Figure 1.
- 3.2 Under Services, click PingEnsite.Settings.

## Using the EnsiteEBS Utility Program

**3.3** Click PingEnsite.Data.

**3.4** Click PingEnsite.Core.

---

**Note:** After you click each Ping button, you should receive a message stating that it is connected. If you do not receive this message, contact ECI support.

---

**3.5** Click Test Linked Server. You should receive a confirmation message. If you do not, contact ECI support for assistance.

## Viewing Event Log

You can use the event log to view previous events in the EnsiteEBS Utility Program.

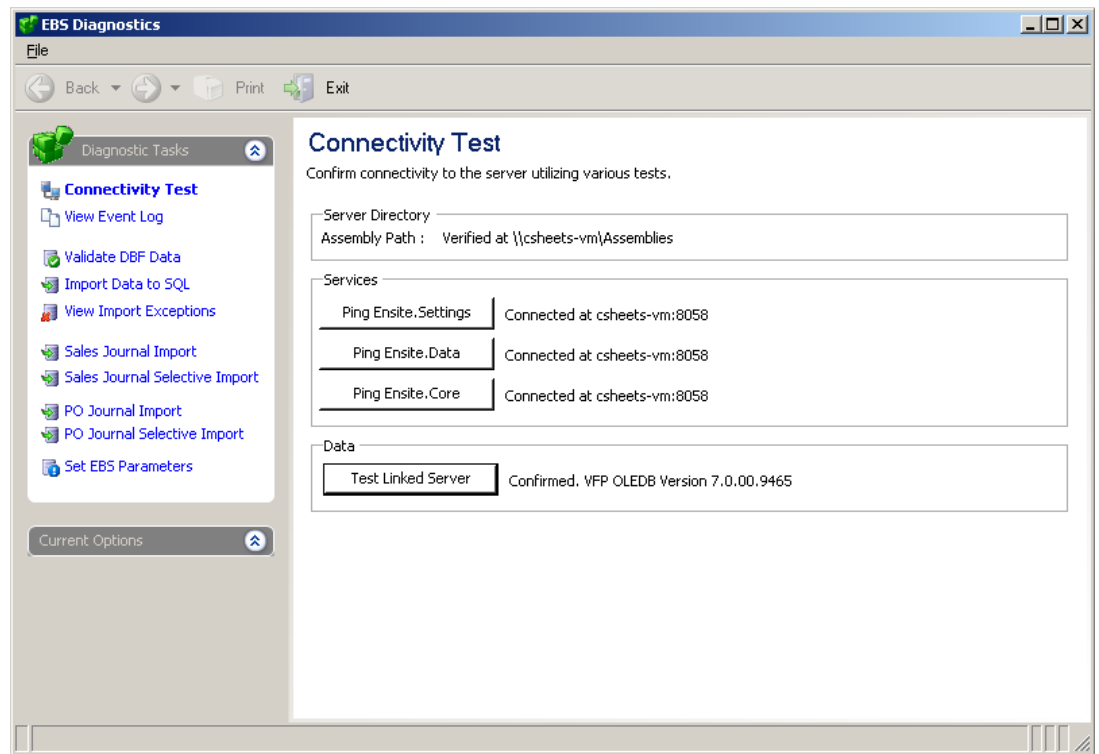
- 1 Click View Event Log.
- 2 Scroll through the event log to locate the event to view. To see details for the event, click View Detail.
- 3 To delete all events in the event log, click Clear Event Log.
- 4 To refresh the event log and view recent events, click Refresh.

---

**Note:** You can view the event log and run the connectivity test on both the client and the server.

---

**Figure 1:  
Connectivity  
Test**

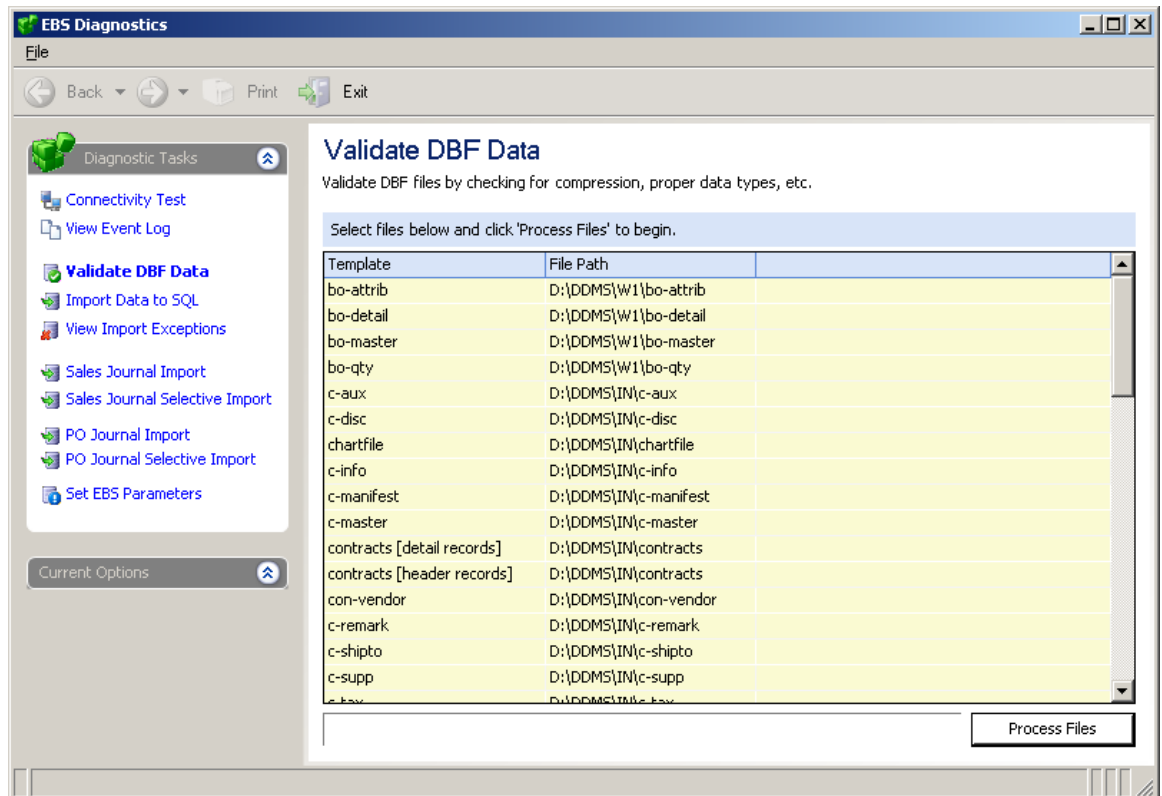


## Validating DBF Data

Before you import DBF data to SQL, you need to make sure that the data is valid. The new SQL database requires that data adhere to specific rules. For example, numeric fields must have valid numeric values and date fields must have valid dates. While current DDMS applications do not return an error if these conditions are not met, all invalid data must be corrected before importing it into the SQL database.

- 1 Click Validate DBF Data in the Diagnostic Tasks box.
- 2 The Validate DBF Data window opens. See Figure 2. To validate specific files, highlight the files. If you do not highlight specific files, all files are validated. Click Process Files. As the system is validating, a Complete message appears next to the file name. If your data is invalid, contact ECi support for assistance.

**Figure 2:**  
Validate DBF  
Data



## Importing Data to SQL

Once you receive a confirmation message for each of the connectivity tests, you can use the EnsiteEBS Utility Program to import data to SQL.

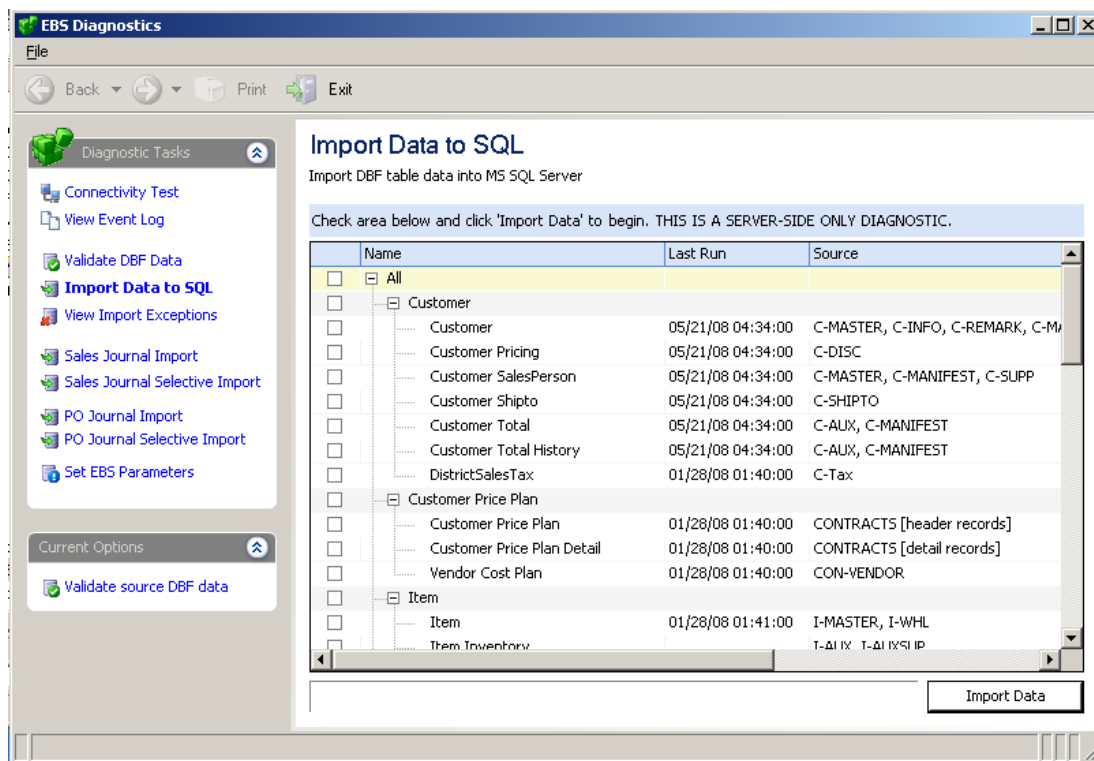
- 1 Click Import Data to SQL. The Import Data to SQL window opens. See Figure 3.
- 2 Click the All check box to import all data to SQL.

**Note:** If you have not already validated your data, you need to do so before you import. Click Validate Source DBF Data. You must fix any problems identified before you import. Files can be imported individually or in groups if necessary. If you correct a file, you can import it by itself. You must import all data files before using the new EBS Price Plans and Price Modeling features.

- 3 Click Import Data. The program imports the data to the selected SQL Tables.
- 4 Once the program finishes importing the data, the View Import Exceptions window opens, displaying any files that were not imported.

**Note:** The system does not import records with duplicate keys. If you have other exceptions, contact ECi support for assistance.

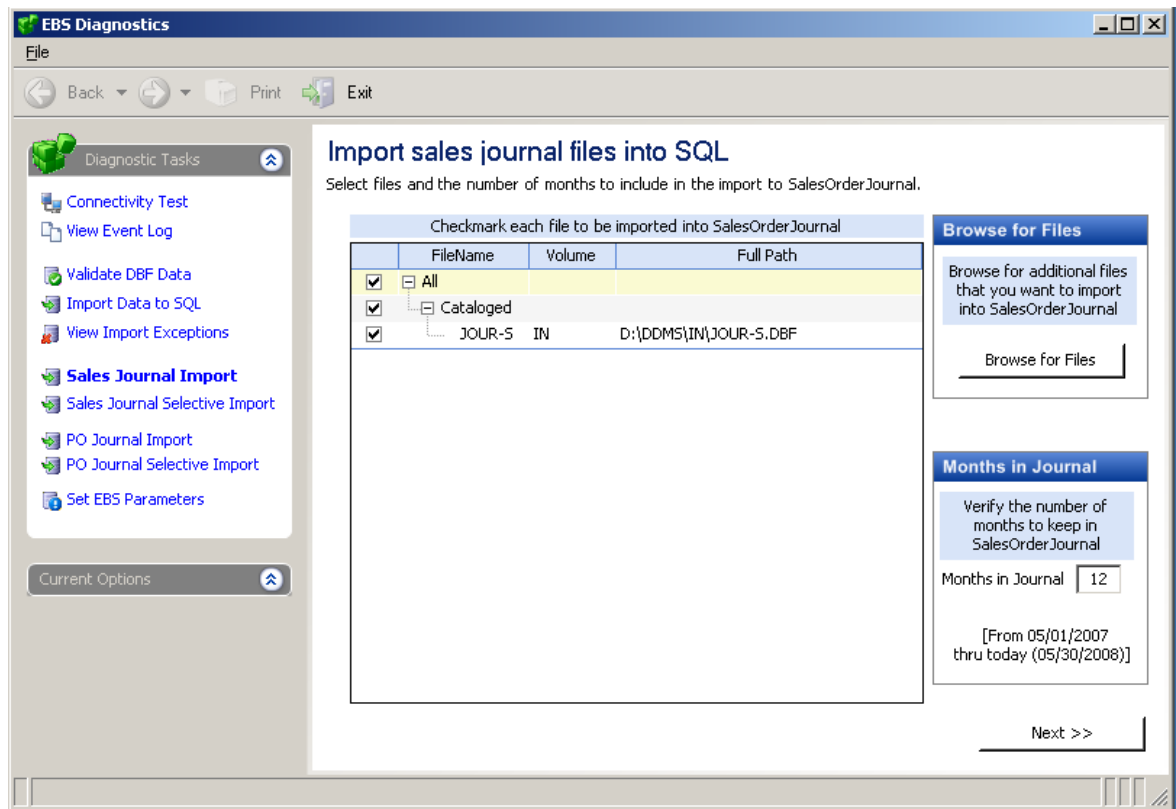
**Figure 3: Import Data to SQL**



## Importing Sales Journals

You must import sales journals to SQL if you plan to use the new Price Modeling application to analyze past sales. You can use the Import Sales Journal function to import data from sales journal files to the SalesOrderJournal SQL Table and the SalesOrderArchive SQL Table. The SalesOrderJournal contains your most recent sales. You must specify the number of months to store in this table. All sales that are older than the specified number of months can be imported to the SalesOrderArchive during the same procedure. After the initial import, the system automatically adds new completed sales to the SalesOrderJournal file. It also moves past sales that are no longer within the specified number of months to the SalesOrderArchive table.

- 1 Under Diagnostic Tasks, click Sales Journal Import. The Import Sales Journal Files into SQL window opens. See Figure 4.
- 2 Click the All check box to import all sales journal files. To import specific files, click the check box next to each file to import. All sales journals listed in the LGA Parameters screen are displayed here. You can also use the Browse For Files option to mark any journals not shown in the LGA listing.



**Figure 4: Import Sales Journal Files into SQL Window**

## Using the EnsiteEBS Utility Program

- 3** In the Months in Journal box, enter the number of months to keep data in the SalesOrderJournal. The journal keeps data up to the current date. For example, if you select 12 months, the journal keeps data from the most recent 12 months. ECI recommends that you accept the default of 12 months. Once you make this selection, the system automatically adds and removes records so that the file retains only journals for the time frame specified. Records older than the time frame are added to the SalesOrderArchive on a daily basis.
- 4** Click Next.
- 5** The Import Sales Archive Files into SQL window opens. You can import journals to the SalesOrderArchive SQL table.
- 6** Click the All check to import all sales archive files. To import specific files, click the check box next to each file to import. You can use the Browse For Files option to mark any journals not shown in the LGA listing.
- 7** In the Select Date Range box, enter the date range for which to place journals in the SalesOrderArchive. You should import journal files older than those imported into SalesOrderJournal. Using the example in **Step 3**, you would import journal files older than 12 months.

---

**Note:** If you have not already validated your data, you need to do so before you import. Click Validate Source DBF Data.

---

- 8** The Sales Order Imports window opens. Confirm your selections in this window, and click Import.

## Importing Selective Sales Journals

You can use the Selective Sales Journal Import function to import specific files into the SalesOrderArchive or a user defined SQL table, for example, SalesOrder2005.

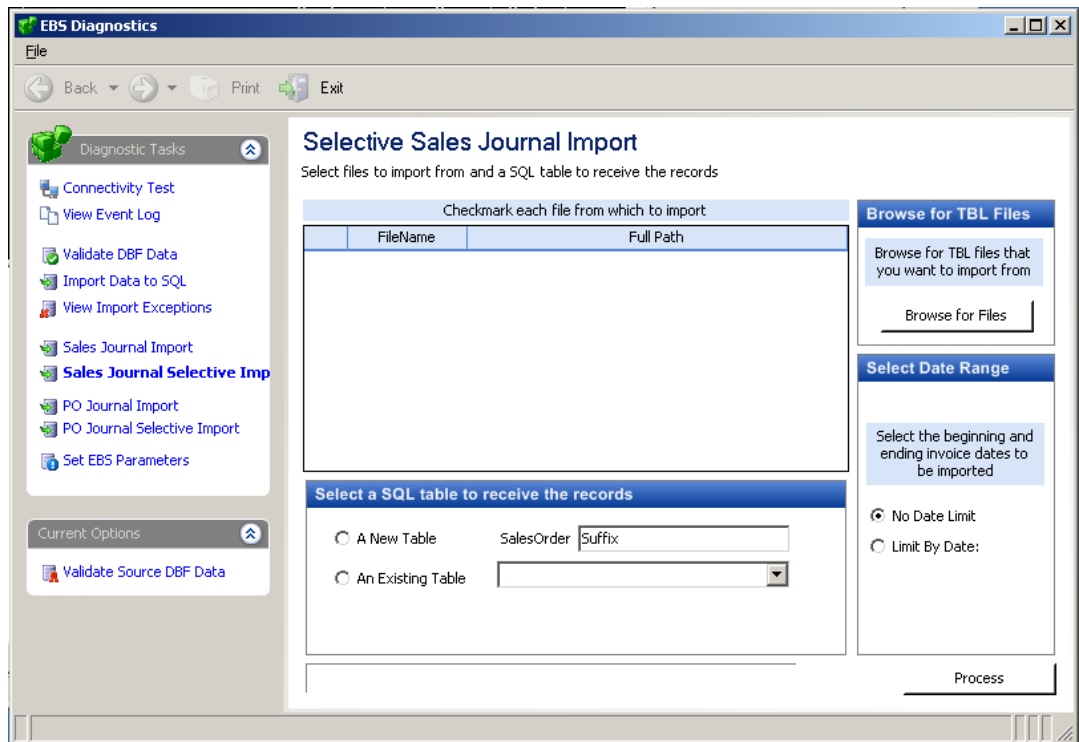
- 1 Under Diagnostic Tasks, select Sales Journal Selective Import. The Selective Sales Journal Import window opens. See Figure 5.
- 2 Click Browse to select files to be imported.
- 3 Select a SQL table to receive the records.
  - 3.1 To import data to a new table, click A New Table and enter a suffix.
  - 3.2 To import data to an existing table, click An Existing Table then select the name of the table in the drop down box.
- 4 Select the date range by which to limit your import. The system defaults to 12 months before the dates you selected for the SalesOrderJournal import.

---

**Note:** If you have not already validated your data, you need to do so before you import. Click Validate Source DBF Data.

---

- 5 Click Process.



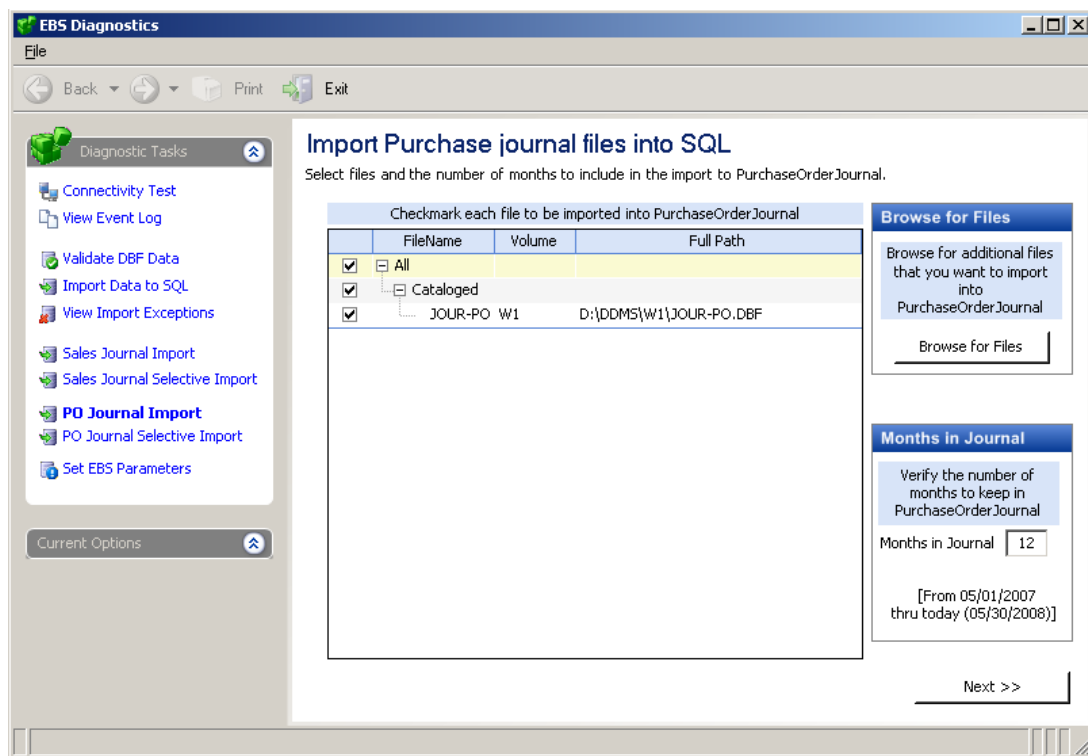
**Figure 5:**  
Selective Sales  
Journal Import

## Importing Purchase Order Journals

You must import purchase order journals to SQL if you plan to use the new application to analyze past purchase orders. You can use the Import Purchase Journal function to import data from purchase order journal files to the PurchaseOrderJournal SQL Table and the PurchaseOrderArchive SQL Table. The PurchaseOrderJournal contains your most recent sales. You must specify the number of months to store in this table. All sales that are older than the specified number of months can be imported to the PurchaseOrderArchive during the same procedure. After the initial import, the system automatically adds new completed sales to the PurchaseOrderJournal file. It also moves previous sales that are no longer within the specified number of months to the PurchaseOrderArchive table.

- 1 Under Diagnostic Tasks, click PO Journal Import. The Import Purchase Journal Files into SQL window opens. See Figure 6.
- 2 Click the All check to import all PO journal files. To import specific files, click the check box next to each file to import. All purchase order journals listed in the LF2 Parameters screen are displayed here. You can also use the Browse For Files option to mark any journals not shown in the LF2 listing.

**Figure 6: Import Purchase Journal Files into SQL Window**



- 3** In the Months in Journal box, enter the number of months to keep data in the PurchaseOrderJournal. The journal keeps data up to the current date. For example, if you select 12 months, the journal keeps data from the most recent 12 months. ECi recommends that you accept the default of 12 months. Once you make this selection, the system automatically adds and removes records so that the file retains only journals for the time frame specified. Records older than the time frame are added to the PurchaseOrderArchive on a daily basis.
- 4** Click Next.
- 5** The Import Journal Archive Files into SQL window opens. You can import journals to the JournalOrderArchive SQL table.
- 6** Click the All check to import all sales archive files. To import specific files, click the check box next to each file to import. You can use the Browse For Files option to mark any journals not shown in the LF2 listing.
- 7** In the Select Date Range box, enter the date range for which to place journals in the JournalOrderArchive. You should import journal files older than those imported into PurchaseOrderJournal. Using the example in **Step 3**, you would import journal files older than 12 months.

---

**Note:** If you have not already validated your data, you need to do so before you import. Click Validate Source DBF Data.

---

- 8** The Purchase Order Imports window opens. Confirm your selections in this window, and click Import.

## Importing Selective Purchase Order Journals

You can use the Selective Purchase Journal Import function to import specific files into the PurchaseOrderArchive or a user defined SQL table, for example, PurchaseOrder2005.

- 1 Under Diagnostic Tasks, select PO Journal Selective Import. The Selective Purchase Journal Import window opens. See Figure 7.
- 2 Click Browse to select files to be imported.
- 3 Select a SQL table to receive the records.
  - 3.1 To import data to a new table, click A New Table and enter a suffix.
  - 3.2 To import data to an existing table, click An Existing Table then select the name of the table in the drop down box.
- 4 Select the date range by which to limit your import. The system defaults to 12 months before the dates you selected for the PurchaseOrderJournal import.

---

**Note:** If you have not already validated your data, you need to do so before you import. Click Validate Source DBF Data.

---

- 5 Click Process.

**Figure 7:**  
**Selective**  
**Purchase**  
**Journal Import**

