

## What It Does

LagasseSweet, provides a downloadable, dealer specific Price File that contains item price changes and product information via their Web site, [www.lagassesweet.com](http://www.lagassesweet.com). ECi Content Services' **LAGACUSTOM** program allows you to import the product information from the LagasseSweet price file into the ECi™ DDMS® Item database.

## How To Do It

Here is a summary of the procedures, and when to complete them:

- Download the import program **LAGACUSTOM** using PSNControl from the O/PUS PSN.  
*How often? Quarterly*
- Obtain the custom Price File from the LagasseSweet website.  
*How often? Dealer determined, or as often as recommended by LagasseSweet*
- Run the **LAGACUSTOM** import program – this is the only Dedicated function of the process.  
*How often? Dealer determined, when a Price File needs to be imported*

### **Downloading and Installing the Latest LAGACUSTOM Program (Quarterly)**

You obtain the latest **LAGACUSTOM** program by running PSNControl and downloading the **LAGACUSTOM** filename.

As part of the download process, a **LAGACUSTOM** icon will be placed on your DDMS server desktop.

### **Obtaining the Price List file from the LagasseSweet website**

From the LagasseSweet Web site, select the following links, as detailed:

1. In your browser, go to [www.lagassesweet.com](http://www.lagassesweet.com)
2. Log in to the **LagasseSweet Online Catalog & Account Management Tools**
3. From the **My Tools** section, click on **File Downloads**
4. In the **File Downloads** section, click **Customized Price Report**
5. Next, select the **Warehouse preference**; select the **DDMS Format**; then Click **Download**
6. When you are prompted for a place to save the file, navigate to the folder where you wish to store the Price File.

---

**Note:** To learn more about the custom Price File, please contact your LagasseSweet account representative; or by calling 800-989-7487 (6:30 AM - 7:00 PM CST).

---

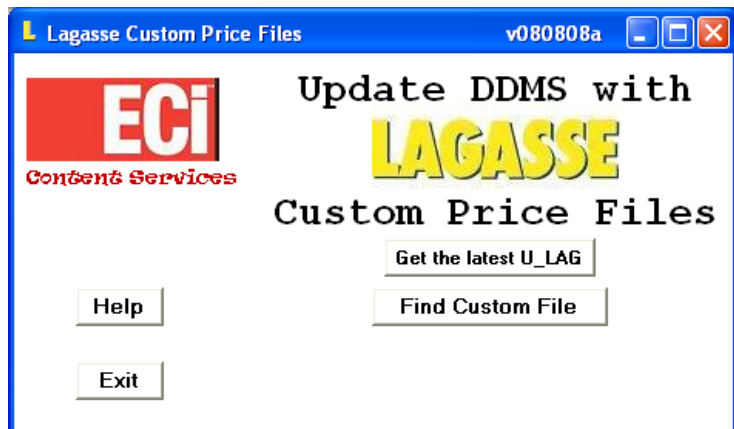
**Running LAGACUSTOM Price List**

7. To start the program, double-click the **LAGACUSTOM** icon on your DDMS server desktop.

**Downloading the Latest U\_LAG Program (Quarterly)**

Each calendar quarter you will need to refresh the internal update program U\_LAG.

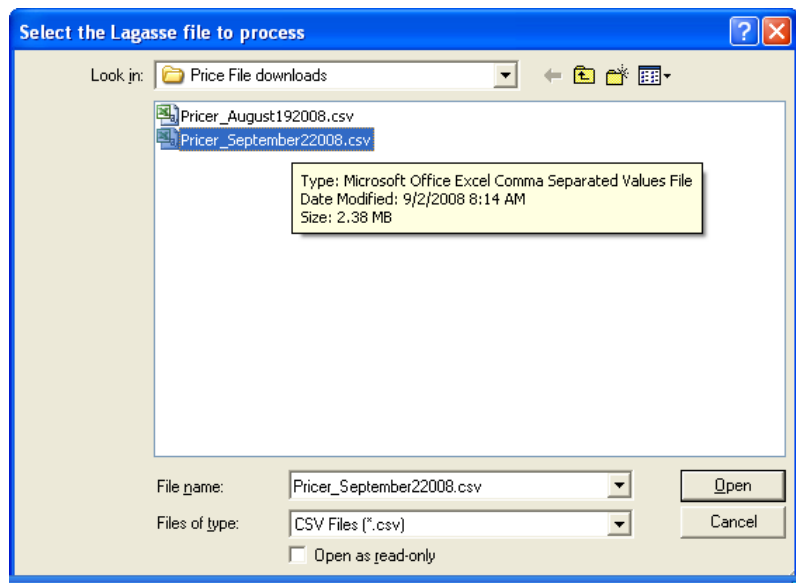
8. After launching **LAGACUSTOM**, click the **Get the latest U\_LAG** button. The PsnControl program will automatically download the U\_LAG program from the O/PUS PSN.



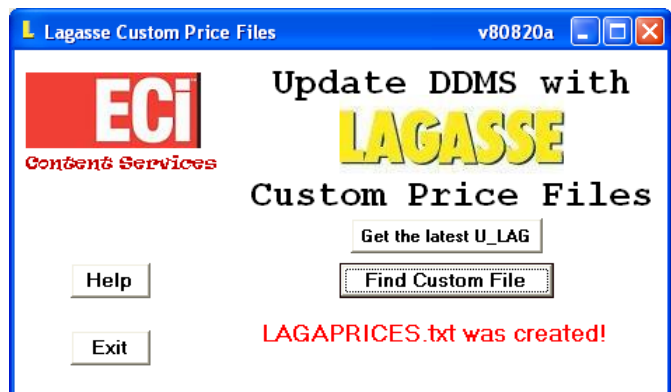
**Selecting the LagasseSweet Price File**

**Note:** Remember, you obtain the Price File from the LagasseSweet Web site.

9. Click the **Find the Custom File** button.
10. Use the standard Windows **Open** dialog box to navigate to and select the LagasseSweet Custom Price file that you want to load. It is in comma-separated value (CSV) format.



11. A confirmation message will be displayed after you have selected the Custom Price file to export to the required LAGAPRICES.TXT file.
12. Upon exporting the Price List file to the LAGAPRICES.TXT output file, the Lagasse Custom Price Files screen will again display, confirming that the LAGAPRICES.TXT was created on your \ddms\SR folder.



## Running the U\_LAG Price List Catalog Update

Use the U\_LAG program to load the LAGAPRICES price file into the DDMS inventory.

---

**Note:** This procedure is dedicated. Make sure no one is using your DDMS system.

---

1. Go to the (+ I) **O/PUS Toolbox**. In DDMS graphical software, double-click **Keyop Menu**, and double-click **Specials**. In the Special Programs screen, type **I**.
2. Type **F** for *O/PUS PSN Utilities*.
3. Type **P** for *Run Program*
4. At the prompt for Which program?, type **U\_LAG** and press Enter.
5. At the prompt to verify **Are you ready to run U\_LAG?**, select your response:
  - a. Type **Y** if you are ready to begin the process.
  - b. Type **N** to start over.

```
Are you ready to run U_LAG? (Y/N)
```

6. Enter the default filename (**LAGAPRICES**) and folder (**SR**), press Enter. Or, if you renamed the default LAGAPRICES file, enter the file name that you used. If you do not fill the field, press Tab to change the folder, and press Enter to accept.

```
File Name and \DDMS folder for the file to be processed:  
FILENAME = [ LAGAPRICES ] FOLDER = [ SR ]
```

7. At the prompt to **Create items that Do Not currently exist in your inventory?**, select your response:
  - a. Type **Y** to add new items that do not already exist in your inventory file.
  - b. Type **N** so that new items will not be added to your inventory.
8. If you answer 'Y' to add new items, you can specify a stock class (default=L) and/or item department (default=1) for the new items.

```
NEW Items will be created in:  
Stock Class? [ ] Default = L Item Dept ? [ ] Default = 1
```

9. At the prompt to **Cost Level to load ? [ ] 1, 2, or 3**, select your response:

---

**Note:** This affects the I-WHL record for items where the Primary Wholesaler is LAGASSE. If, however, an item's Primary Wholesaler is *not* LAGASSE, the LagasseSweet cost will be added (or updated if the LAGASSE record already exists) in the multivendor record (I-CAT).

---

- a. Unless your LagasseSweet account representative has advised you to enter a different value, Type **1**.

The custom price files contain 3 levels of cost, although the dollar value in each level is typically the same value.

10. Enter the 2-character designation for the printer where you want the exception report to be printed. Typically this will be your report printer.

Enter Printer (P1, P2 ...) for Exceptions report [ ]

11. At the prompt to verify it is **OK to proceed**, select your response:
  - a. Type **Y** if you are satisfied with your selections, and the update process will begin.
  - b. Type **N** if you need to change your selections, and the program will abort.

O.K. to proceed ? (Y/N)

### ***Set Purchasing Vendor (Optional Post-Load Step)***

These optional steps move updated item costs into the (E) screen and Item database window. For details, see *O/PUS Toolbox* on the DDMS support site.

12. (Optional) To use the updated prices to determine your Purchasing Vendor, first use (+I-1) Reset Purch Vendor to Primary Whl program in the O/PUS Toolbox.
13. (Optional) Complete your normal post-load procedures to set your Purchasing Vendor using the (+I-L), (+I-Z) or (+I-T) program in the O/PUS Toolbox.
14. If you use Customer Price Plans, Price Modeling, SQL Preview Reports, or other DDMS SQL applications, run a FULL (NOT DELTA) import of all inventory files and CONTRACTS to ensure proper data synchronization, and Restart Scheduler Engine. See “Using the EBS SQL Import Control Panel” on the DDMS support site.

### ***Troubleshooting***

For questions about **LAGACUSTOM** or U\_LAG programs, contact ECi DDMS Technical Support.

#### **Disclaimer**

The item file update that you have requested does not qualify to be error free and/or duplicate free. When loading an update, the O/PUS® software attempts to match each item against an existing record in your database. New records are created only when an item cannot be matched to an existing record. This matching is done using information provided by the vendors.

Sometimes a vendor does not provide enough information to allow the software to accurately identify items. This may be due to a lack of UPC codes, unknown vendor abbreviations, or other factors that are beyond O/PUS' control. In these cases, you may find that you have new items records that duplicate items already in your system.

O/PUS must expressly reject and disclaim any representations, warranties, obligations, liability or responsibility for duplicated item records or product errors in your inventory, and for any losses or damage, including consequential damages, resulting from use of the duplicated or erroneous information. Nor can, O/PUS provide support on duplicated or erroneous item records, or on issues resulting from them.