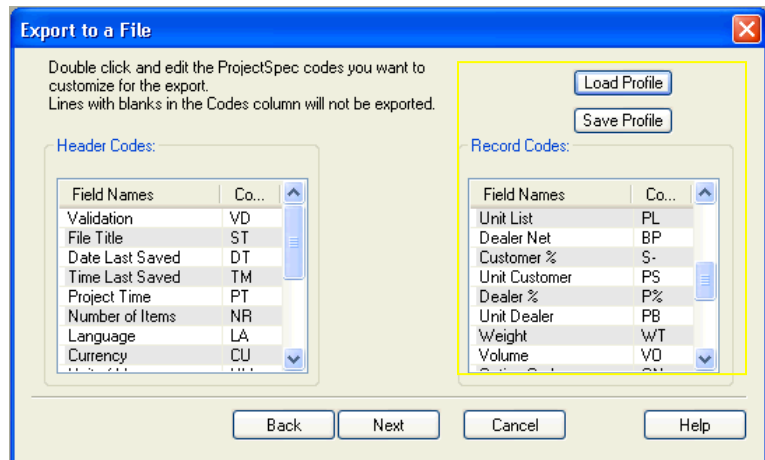
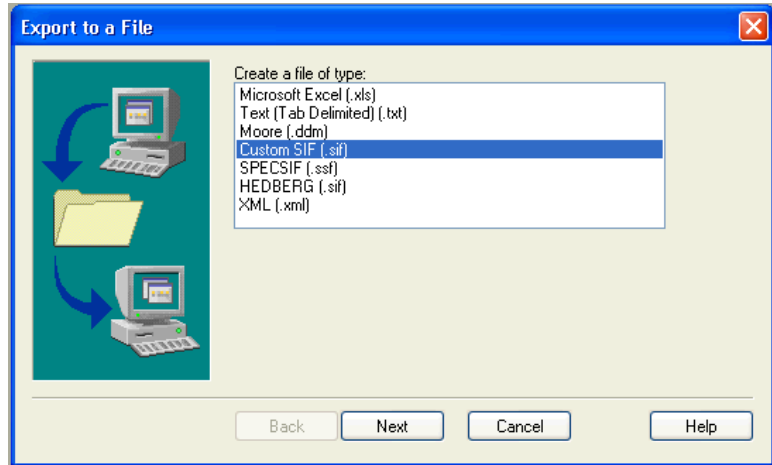


One of the specifier software programs used by contract furniture dealers is ProjectMatrix™ ProjectSpec®. After creating a quote or order based on manufacturer catalog options and pricing in ProjectSpec, you can export the SIF file for seamless integration with your DDMS flow for sales, purchasing, warehouse, installation, accounting, and project management.

Setting Up A Custom SIF DDMS Export Profile in ProjectSpec

ProjectSpec allows you to map certain record fields to specification codes in the exported SIF file. To ensure proper integration of the SIF file with your DDMS system, set up a DDMS Export profile by following these steps in ProjectSpec:


1. Open a ProjectSpec file that is ready to convert to a SIF file.
2. Click **File > Export**.
3. When prompted to Create a file of type, select **Custom SIF (.sif)** as shown at right.
4. Click **Next**.
5. Select a location where you wish to save the SIF file, such as C:\SIF Files.
6. Name the SIF file.
7. Click **Next**.
8. Scroll in the Record Codes box and double-click to edit the following codes:
 - Tag 1 = TG
 - Tag 2 = GC
 - Tag 3 = L1
 - Unit List = PL
 - Dealer Net = BP
 - Unit Customer = PS
 - Unit Dealer = PB



9. Once the changes are made, click the **Save Profile** button above the Record Codes box.
10. Type in profile name (such as DDMS) and click **OK**.

Note: For subsequent SIF files, you can click on **Load Profile** and select **DDMS**.

11. Click **Next** to export the SIF. When it is finished, click **OK**.

You can then import the SIF file into your DDMS Furniture Edition Order Entry Detail tab, using the  **Process SIF** (F12) toolbar function. For detailed instructions, see the DDMS online help topic, Creating Furniture Orders with SIF File Imports.