

IMPORTANT!!

YOU MUST READ THIS BEFORE INSTALLING VERSION 8.16.2

Version 8.16.2 or higher includes many changes including an exciting new look and feel to the software installation. For complete instructions on installation, please see the *Installing Version 8 DDMS* handout included with this package. Please read the following BEFORE installing.

1. You must be on version 8.13.0 (graphical) or later to install version 8.16.2 or higher. If your graphical version is not 8.13.0 or higher and you do not have a later version to install, contact ECi DDMS Support and ask for version 8.14.46. If you already have version 8.13.0 or higher and just haven't installed yet, install the software then install 8.16.2.
2. If you are NOT currently using the new EBS Customer Price Plans, Price Modeling, or SQL Reporting, then you need to insure that your SQL Server has not been disabled. If SQL has been disabled, the install will fail. Follow these steps to make sure that SQL Server Startup Type box is set to Automatic or Manual *prior* to installing v.8.16.2.

2.1 Right-click My Computer on the desktop of your DDMS server.

2.2 Select Manage.

2.3 The Computer Management window opens. In the left pane of the window, expand Services and Applications by clicking the + sign.

2.4 Click Services. All the services display in the right pane of the window.

There are two services for which you must modify properties: Ensite.DataPortal and SQL Server (ECI2). You must highlight each of these services then complete the following steps for each one.

2.5 Highlight either Ensite.DataPortal or SQL Server (ECI2) in the right pane of the window.

2.6 After highlighting the service, right-click and select Properties.

2.7 Use the drop down arrow to set the Startup Type box to Automatic or Manual.

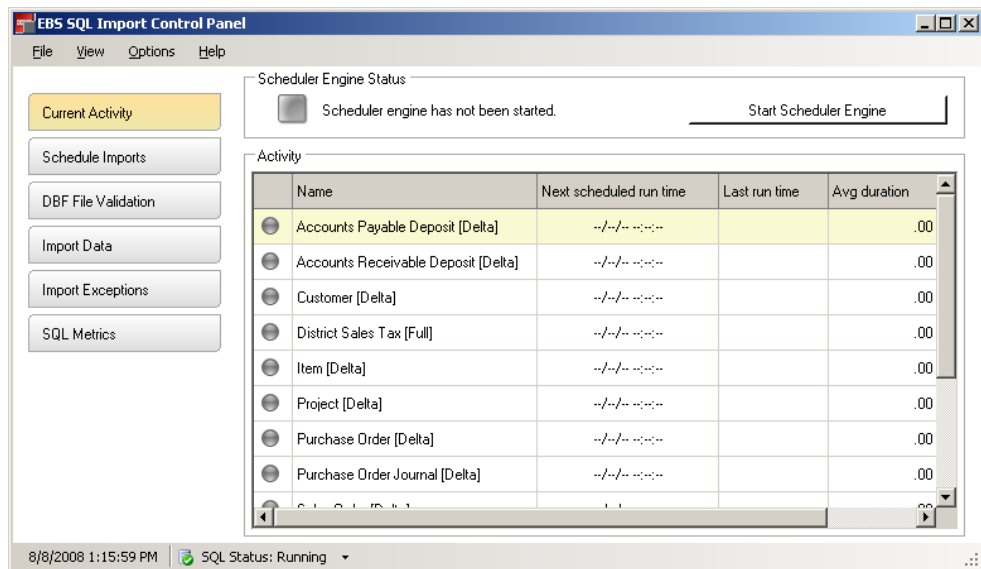
2.8 Click OK. *You must repeat these steps for each of the above named services.*

- With the release of Version 8.16.2, the previous EBS Utility program has been replaced with the new EBS SQL Import Panel, shown below. This window not only lets you validate and import your data for use with the new SQL databases, it also gives you better control over how your DBF and SQL files are kept in sync. Instead of using W-CHANGES to sync your DBF and SQL files in cycles, you can now schedule how often the sync occurs and specify file groups. This allows you to better control the impact that the sync has on your system resources.

If you are currently using or plan to use Customer Price Plans, Price Modeling, SQL Reporting, or the new Furniture Project Management, you must perform the steps listed below (after you've installed 8.16.2). Perform these steps using the new EBS SQL Import Panel.

- **DBF File Validation.** Validate your data then correct any errors before importing.
- **Import Data.** You must import your data from DBF to SQL. You must perform a full import.
- **Schedule Imports.** You can set up an import schedule and configure by file groups. You decide how frequently to update the SQL tables.
- **Start Scheduler Engine.** After you've created schedules, you must click Start Scheduler Engine.

The EBS SQL Import Control Panel automatically opens, along with the TBL Server window but *does not* automatically start. After completing the steps above, you *must* start the scheduler engine to begin the sync process. For detailed instructions, refer to the *Using the EBS SQL Import Panel* handout that you received with this packet.



4. During the 8.16.2 install, your system takes two snapshots of your SQL database. Your system must have enough space to hold these two snapshots until the install is complete. If it does not have enough space, an error message appears, as shown below. If you see this error message, simply click OK and continue business as usual. The software install has not yet begun. For assistance in creating space on your hard drive, contact ECI DDMS Support.



5. After installing 8.15.9 or higher, it may appear as if you have multiple sessions of TBL Server running on your system (see below). This appears only if you have the console set up to display for TBL NetComm or UtilExt. You can disable the consoles in TBL Config, if needed. For instructions, see *Disabling TblNetCom Console and UtilExt Console in DDMS 8.15* at <http://www.ddms.com/support/release/dd815console.htm>

